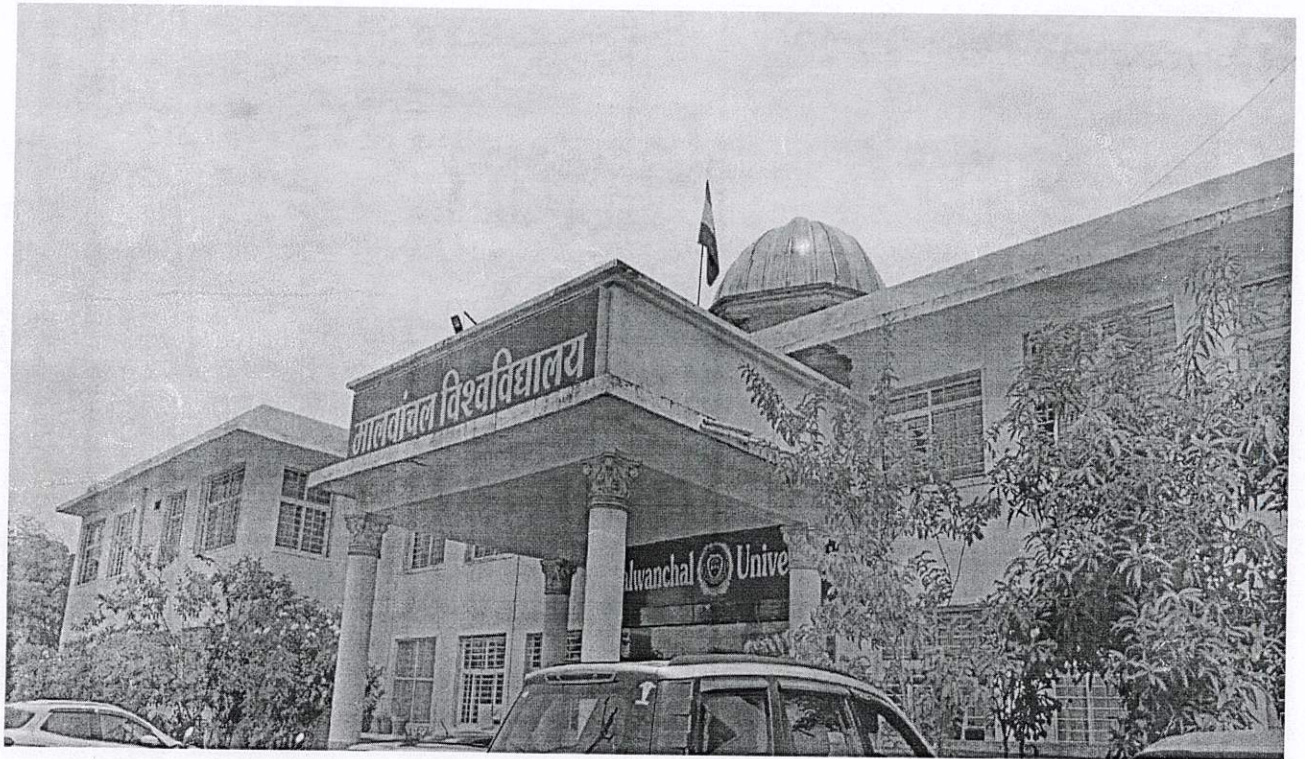




# MALWANCHAL UNIVERSITY, INDORE



## INTELLECTUAL PROPERTY RIGHT POLICY

Issued date: 20/8/2022

Created by: Assistant Registrar - Research

A handwritten signature in blue ink, appearing to be 'Sud'.

Approved by: Registrar  
Malwanchal University  
Indore (M.P.)

A handwritten signature in green ink, appearing to be 'Sud', with a blue circular stamp over it. The stamp contains the text 'Registrar Malwanchal University Indore (M.P.)'.

## **Introduction:**

Intellectual Property (IP) refers to creations of the mind, such as inventions; literary and artistic works; designs and symbols, names and images used in commerce.

IP is protected in law by, for example; patents, copyrights and trademarks, which enable people to earn recognition or financial benefit from what they invent or create. By striking the right balance between the interests of innovators and the wider public interest, the IP system aims to foster an environment in which creativity and innovation can flourish.

## **Terms, Definition and Synonyms:**

**Copyright:** Copyright is a legal term used to describe the rights that creators have over their literary and artistic works. Works covered by copyright range from books, music, paintings, sculpture and films, to computer programs, databases, advertisements, maps and technical drawings.

**Patents:** A patent is an exclusive right granted for an invention. Generally speaking, a patent provides the patent owner with the right to decide how or whether the invention can be used by others. In exchange for this right, the patent owner makes technical information about the invention publicly available in the published patent document.

**Trademarks:** A trademark is a sign capable of distinguishing the goods or services of one enterprise from those of other enterprises. Trademarks date back to ancient times when artisans used to put their signature or "mark" on their products.

## **Purpose:**

The purpose of this policy is to promote these missions by making invention copyrightable works and other intellectual property that may be created by Clinician, researcher, trainee and others who are at or associated with the Institution for the benefit of the public while also providing for a fair allocation of the financial costs and rewards associated with them.

## **Objectives:**

The objective of this policy document of Malwanchal University is to lay down the IP policy. The Principal objectives Patent and Copyright policy are:

- a) To foster, stimulate and encourage creative activities in the widest sense in all the areas in which academic, consultancy, innovation, incubation and research programmes that are offered by Malwanchal University.
- b) To protect the legitimate interest of faculty/scholars/students of Malwanchal University and to avoid as far as possible conflict of opposing interests.
- c) To lay down a transparent administration system for the ownership and control of intellectual properties and sharing of the revenues generated and owned by Malwanchal University.
- d) To promote, stimulate and encourage creative activities among the stakeholders of Malwanchal University leading to generation of intellectual assets.
- e) To provide an all-inclusive single window reference system for all IPR issues relating to the IP generated at the Malwanchal University.
- f) To safeguard the interest of the inventor/creator of IP and provide fair distribution of returns accruing from the commercialization of IPR.

h) To provide legal support, wherever necessary, to defend and protect IPR obtained by the Malwanchal University against any infringement.

### **Policy Statement:**

Intellectual Property Cell on behalf of Research Cell looking after overall activities concerning with intellectual property of the Institution.

- a) IPR cell is responsible for arranging social activities for members of the organization and promotes knowledge of intellectual property law by lectures, discussions, books, correspondences, pamphlets, dissemination of information or otherwise.
- b) IPR cell shall assist and facilitate owner of intellectual property.
- c) IPR cell also fosters ties, mutual cooperation and understanding among those who are practicing; in the field of intellectual property law and through such ties promotes the protection and development of intellectual property in Institution.
- d) IPR cell shall provide customized corporate services such as legal consultancy in Intellectual Property Rights and in related areas such as anti-dumping, anti- competition, IP audits, anti-trust laws and respond to questions affecting intellectual property law and/or the interest of the Institution faculty/students.
- e) IPR cell shall encourage innovation of IPR's by interacting and keeping pace with development outside the Institution and engage in activities in conjunction with other bodies or associations within the limits of the Institution's objects.
- f) IPR cell shall arrange reciprocal concessions and co-operation with other such bodies and associations and assists in implementing the rules and enforcement of laws pertaining to IPR.
- g) IPR cell shall conduct training and capacity building activities for students and faculty and seeks affiliation with National or International bodies keeping in view of the fact that personal empowerment and convergence plays a crucial role in IPR issues.
- h) IPR cell shall monitor all the IPR concerned on-going activities in the Institution, maintains the data, records and documentations at IPR cell.
- i) If faculty is applying for any patent, the Institution has special incentive for the same.

### **Responsibilities:**

It is the responsibility of the Research Cell, Malwanchal University for implementation, monitoring and review the IPR of the researcher of the Institution.

### **Reporting:**

The reporting authority is the Chairperson, Research Advisory Committee of Malwanchal University.

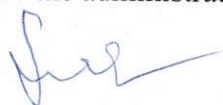
### **Records management:**

The documents pertaining to the IPR of the researchers of the Institution shall be maintained and managed in soft and hard copies for minimum five year after granting the patents, copyrights and trademarks.

### **Policy Administrator:**


Chairperson, Research Advisory Committee shall be the administrator of this policy

### **Implementation Procedure:**



Registrar  
Malwanchal University  
Indore (M.P.)

- a) In practice, upon submission of IP documents to Research Cell or verbal intimation by innovator to Research officials, Research Cell forward the innovator' s idea to Chairperson and other Committee members of IPR from the University, for further screening and identification of IP in the innovator claims.
- b) Upon finding the content, Committee members of IPR files the application for eligible claims.
- c) All the expense for filing the application will be either borne by Malwanchal University or self by innovators' and will consider as "The Applicant".
- d) Innovator has all the authority for commercialization of the IP with prior MoU. For any commercial benefits, Innovator and Malwanchal University will deal in financial share upon mutual consent.

  
**Chairperson**  
**Research Advisory Committee**  
**Malwanchal University**

  
**Registrar**  
**Malwanchal University**  
Indore (M.P.)