

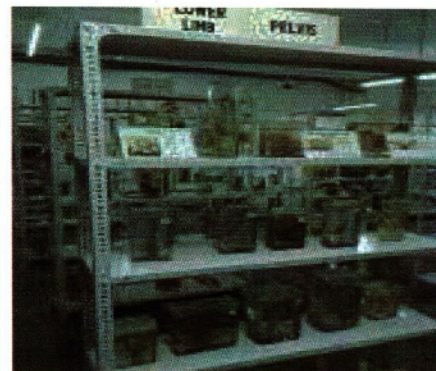
## Anatomy Museum

### 1. Requirement of Museum in Anatomy.

- In gross anatomy museum
  - Specimen of different part of dissected human organ
  - In genetic model shows different gene normality and abnormality
  - Embryology model showing development of embryo from zygote formation to birth
- Radiology section
  - X-Ray
  - C.T. Scan



F.g. Showing – Gross museum of Anatomy.



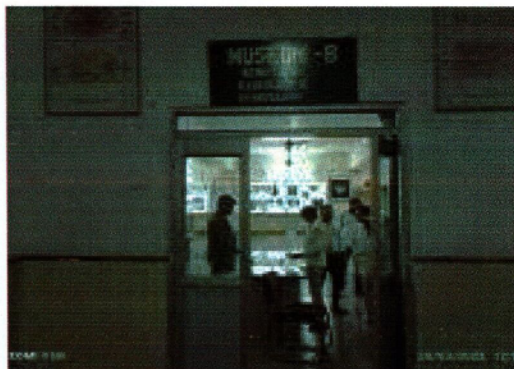
F.g. Showing- Specimen of pelvis region.



F.g. Showing- Specimen of lower limb



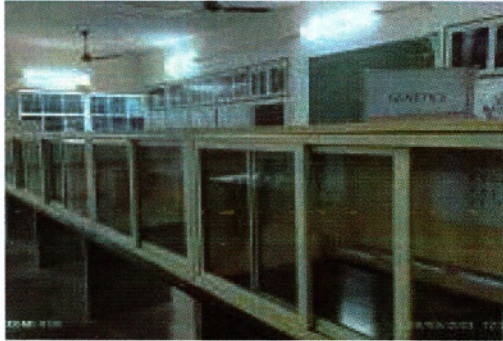
F.g. Showing- Specimen of Different gestation age of Embryo



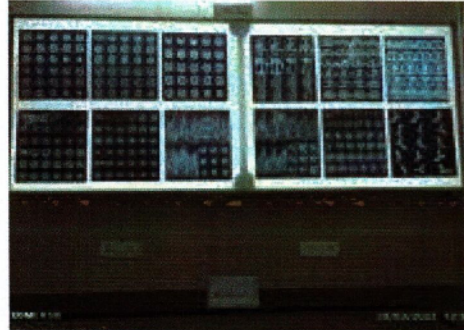
F.g. Showing – Museum of Embryology Model, genetic model and Radiology



F.g. Showing- X-Ray and CT- Scan



F.g. Showing- Models of genetic



F.g. Showing- CT- Scan  
(Radiology)



**Registrar**  
**Malwanchal University**  
Indore (M.P.)