



Elevate Your Programming With **AI**



JOIN OUR **B.Sc./M.Sc. (Computer Science) PROGRAM**

The Computer Science programs is designed to equip students with cutting-edge technical skills and in-depth knowledge essential for thriving in the dynamic IT and technology industry. Through a comprehensive curriculum, hands-on learning, and industry exposure, students gain expertise in programming, artificial intelligence, data science, cybersecurity, and cloud computing. This program opens doors to global career opportunities, empowering students to innovate and excel in the ever-evolving world of technology.



GET UPTO
**100%
SCHOLARSHIP***

APPLICABLE ON ALL GOVT.
SCHOLARSHIP SCHEMES

**Inhouse Placement
Opportunities**



Job Opportunities After B.Sc Computer Science

- AI & Machine Learning Engineer
- AI Specialist/Developer
- Data Scientist (AI-focused)
- Robotics Engineer
- UX Designer
- Database Administrator
- Software Engineer
- Mobile App Developer

Why choose Malwanchal University?

- Cutting-edge computer lab equipped with the latest technology computers.
- Faculties with over 15 years of experience
- Global job prospects
- Learn from the legacy of 17 years of excellence at Central India's leading medical education group

FOR ADMISSION CONTACT 7880154608,8349101011



**MALWANCHAL
UNIVERSITY**

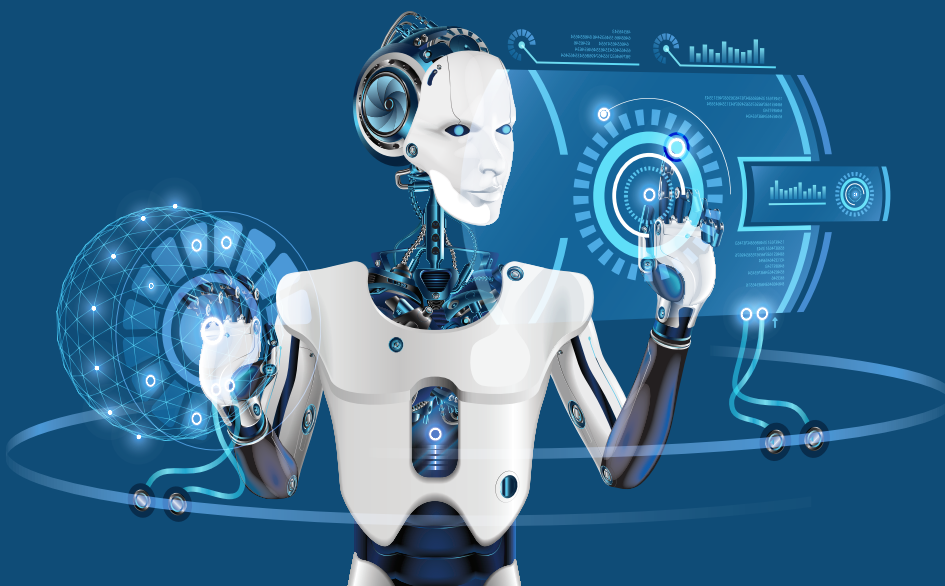
(Index Group of Institutions)
Established & Approved by M.P. Govt., MPPURC Reg. No. MPPU20,
UGC Under Section 2(f) | NAAC Accredited

ACCREDITATIONS & AFFILIATIONS



Eligibility For Program

Candidates with (10+2 in IT/Comp science/PCM/PCB are eligible)
Through Malwanchal University Selection Test (MUST)*



Infrastructure



Cutting edge Comp Lab
with latest computers



Ergonomic furnitures
for high productivity



Cloud storage for
data protection



Upto 1GBPS internet
connection



Gymnasium and
Sports Facilities



Hostel for
boys and girls



Technology enabled
lecture hall

Other Courses Offered

MEDICAL

- MBBS
- MD
- BDS
- MDS
- Dental Mechanics
- Nursing
- Physiotherapy & Paramedical
- B.Pharma, D.Pharma
- BHMS
- M.Sc.
 - Bio-Chemistry • Microbiology
 - Anatomy • Physiology • Biotech

MANAGEMENT

- MBA (Hotel Management)
- MBA (Hospital Administration)
- MBA (Plain) • BBA (Plain)
- BBA (Hotel Management)
- BBA (Hospital Administration)
- B.Com. • M.Com.

LIBRARY SCIENCE

- B.Lib. Sc. • M.Lib. Sc.

ARTS

- B.A. • M.A.

AGRICULTURE

- B.Sc. (Hons.)

RESEARCH

- Ph.D. (Medical)
- Ph.D. (Non-Medical)

DESIGN & FASHION

- B.Design (F.D)

SCIENCE (Non-Med.)

- B.Sc.
- M.Sc.
 - Bio-Chemistry • Microbiology
 - Biotechnology

JOURNALISM & MASS COMMUNICATION

- BJMC • MJMC

LAW

- B.A.LLB (Hons) • L.L.B (Hons)

FOR ADMISSION CONTACT 7880154608, 8349101011



**MALWANCHAL
UNIVERSITY**

(Index Group of Institutions)

Established & Approved by M.P. Govt., MPPURC Reg. No. MPPU20,
UGC Under Section 2(f) | NAAC Accredited

Campus: Index City, NH-59A
Nemawar Road, Indore - 452016 (M.P.)

☎ 0731-4013774

✉ admission@malwanchaluniversity.in

GROUP INSTITUTIONS:

CENTRAL INDIA'S LARGEST MEDICAL EDUCATION GROUP


Index
Medical College Hospital & R.C.


Index
Institute of Dental Sciences


Index
Nursing College


**PHYSIOTHERAPY
& PARAMEDICAL
SCIENCES**


INDEX
INSTITUTE OF PHARMACY


**MOUNT
INDEX**
INTERNATIONAL
SCHOOL


AMALTAS
UNIVERSITY
Dewas


AMALTAS
Institute of Medical Sciences
Dewas