



MALWANCHAL UNIVERSITY, INDORE



Policy on Progressing Towards Net Zero

Year- 2025-2026


Registrar
Malwanchal University
INDORE (M.P.)



Policy on Progressing
Towards Net Zero

2025-2026

Document No- MU/ PTNZ /01/2026

Issued Date - 26/02/2026

Revision Date :- 9/03/2026

Created by :- Director IQAC

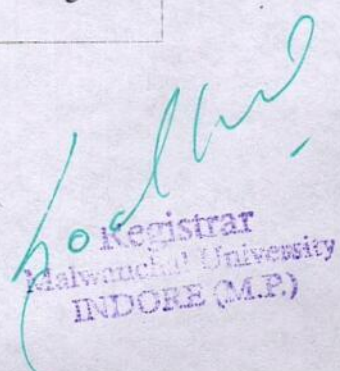
Approved by- Registrar

Handwritten signature in green ink.

MALWANCHAL UNIVERSITY, INDORE

Policy on Progressing Towards Net Zero

S.no	content	Page no
1	introduction	1
2	objective	
3	scope	
4	Energy Efficiency	2
4.1	ENERGY EFFICIENT APPLIANCES	
4.2	ENERGY CONSERVATION	
4.3	RENEWAL ENERGY	
4.4	Sustainable Transportation	
4.5	Waste Management	
4.6	Water Conservation	
4.7	GREEN INFRASTRUCTURE	3
4.8	GOVERNANCE AND IMPLEMENTATION	
4.9	COMPOSITION	
5	RESPONSIBILITIES	
6	Monitoring and reporting	4
7	Awareness and capacity building	
8	Targets	
9	Review and continuous	5
10	Approval	


Registrar
Malwanchal University
INDORE (M.P.)

Policy on Progressing Towards Net Zero

1. Introduction:

The term Net Zero denotes a state in which the greenhouse gases released into the Earth's atmosphere are meticulously counterbalanced by their removal thus efficiently halting the progression of global warming.

The Net Zero policy of Malwanchal University outlines the institution's commitment to reduce greenhouse gas emissions and move towards Net Zero through sustainable practices, energy efficiency, and environmental conservation.

The policy aligns with India's Net Zero target by 2070 .It is incumbent upon us to explore diverse strategies to progress towards a more sustainable and climate resilient future.

2. Objective:

To reduce the carbon footprint of the university campus.

To promote renewable energy and energy-efficient infrastructure.

To encourage sustainable transportation and waste management.

To promote green campus initiatives and environmental awareness.

To achieve progressive reduction in greenhouse gas emissions

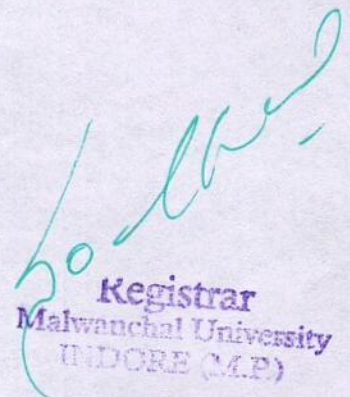
3. Scope:

This policy applies to:

Academic buildings

Hospitals and clinical facilities

Hostels and residential areas


Registrar
Malwanchal University
INDORE (M.P.)

Laboratories and administrative offices

Transportation and campus utilities

4. Reduction Strategies-

4.1 Energy Efficiency:

Adoption of LED lighting.

Upgrading insulation

switching off lights in well lit corridors in day time.

Switching off lights, fans , AC and appliances when not in use.

4.2 ENERGY EFFICIENT APPLIANCES

To drive down energy conservation, energy - efficient appliances.

Regular energy audits and monitoring.

4.3 ENERGY CONSERVATION:

Malwanchal University is committed to fostering a culture of energy conservation across the campus . Awareness campaigns are organised.

4.5 RENEWAL ENERGY

Installation of Solar photovoltaic panels harnessing the power of sunlight to to generate clean energy.

4.6 Sustainable Transportation:

Encourage carpooling and public transport.

Promote bicycles and electric vehicles within campus.

Provide charging stations for electric vehicles


Registrar
Malwanchal University
INDORE (M.P.)

4.7 Waste Management

Segregation of waste at source.

Biomedical waste management in hospitals.

Composting of organic waste.

Recycling of paper, plastic, and electronic waste.

4.8 Water Conservation

Rainwater harvesting systems.

Wastewater treatment and reuse.

Water- efficient fixture and monitoring

4.9 GREEN INFRASTRUCTURE

Tree plantation and carbon sequestration initiatives.

Development of green spaces and biodiversity zones.

Eco-friendly construction practices

5. GOVERNANCE AND IMPLEMENTATION

Committee is established by m.u

6. COMPOSITION

Vice chancellor / Director – Chairperson

Environmental officer

IQAC Coordinators

Godhal
Registrar
Malwanchal University
INDORE (M.P.)

Esate Manager

Faculty representative

Student representative

7. RESPONSIBILITIES

Develop sustainability actions plans

Monitor energy and resource usage

Promote awareness and training

Prepare annual sustainability reports

8. Monitoring and reporting

The institution will

Conduct annual carbon footprint assessments

Maintain records of energy water and waste data

Publish sustainability reports

Track progress towards net zero target

9. Awareness and capacity building

Organize environmental awareness programs.

Conduct workshops on sustainability practices.

Encourage student participation in green initiatives.

10. Targets

The institution will adopt phased targets such as:

Reduce electricity consumption by 20-30% in 5 years.

Increase renewable energy usage annually.

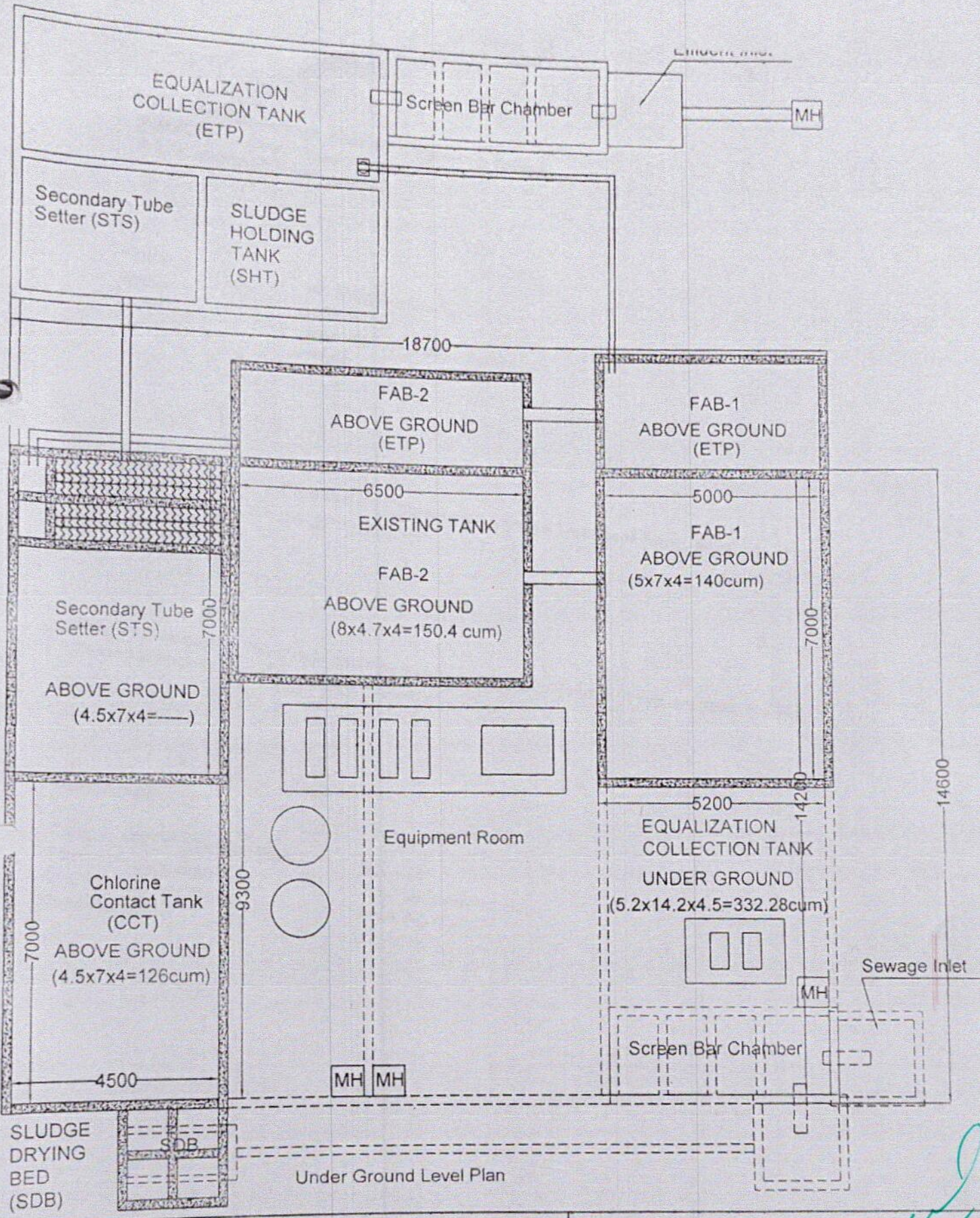
Achieve significant reduction in waste sent to landfill.

11. Review and continuous

The Net Zero Policy will be reviewed every three years to incorporate new technologies and sustainable practices.

12. Approval

This policy is approved by the Governing Body / Board of Management and is applicable to all institutions under the university.

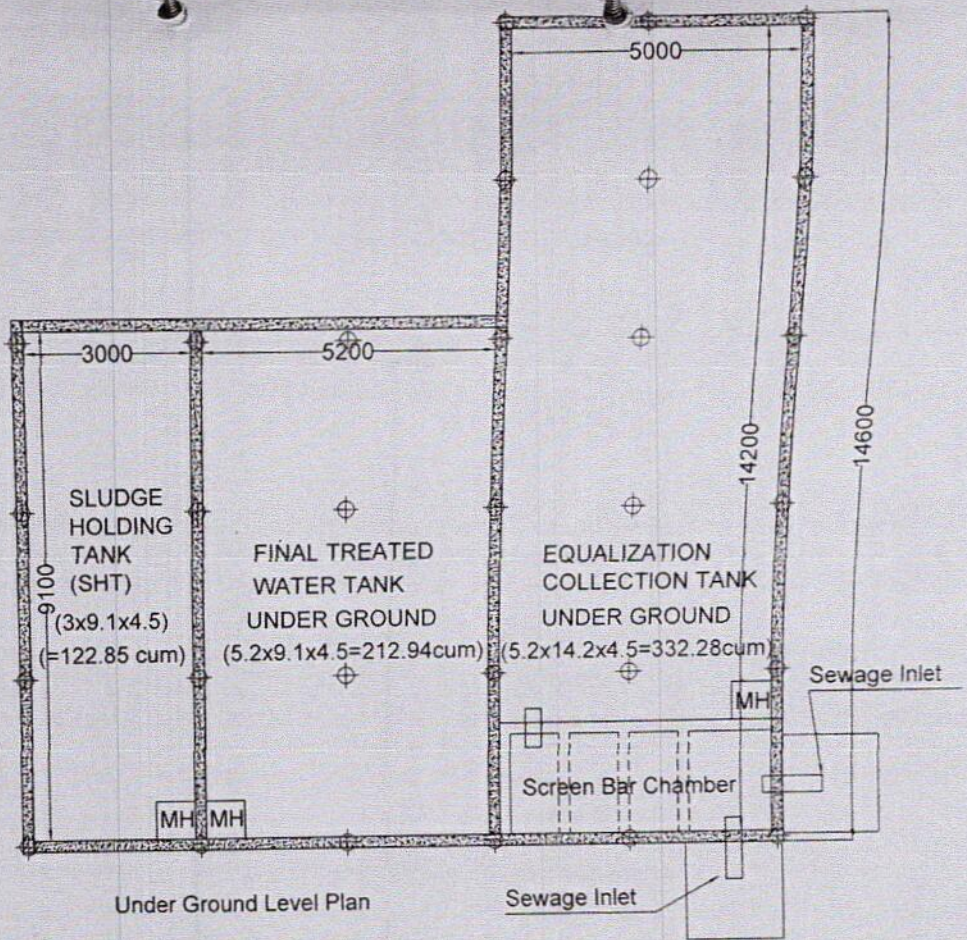


STP - 500 KLD and ETP-100 KLD

Index Institute of Medical Science,
Khudail, Indore

Registrar
Malwanchal University
INDORE (M.P.)

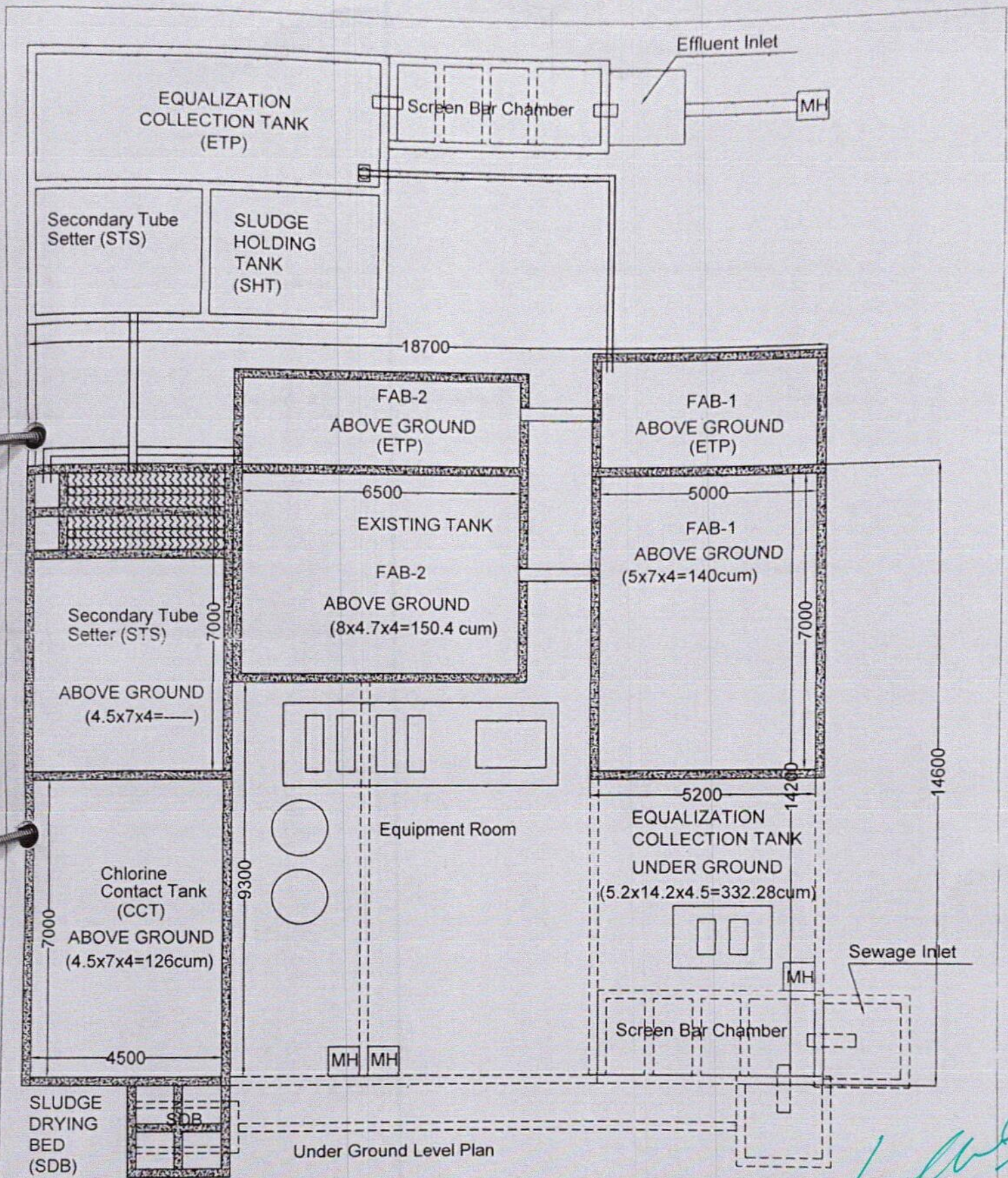
Scanned by Scanner Go



STP - 500 KLD and ETP-100 KLD

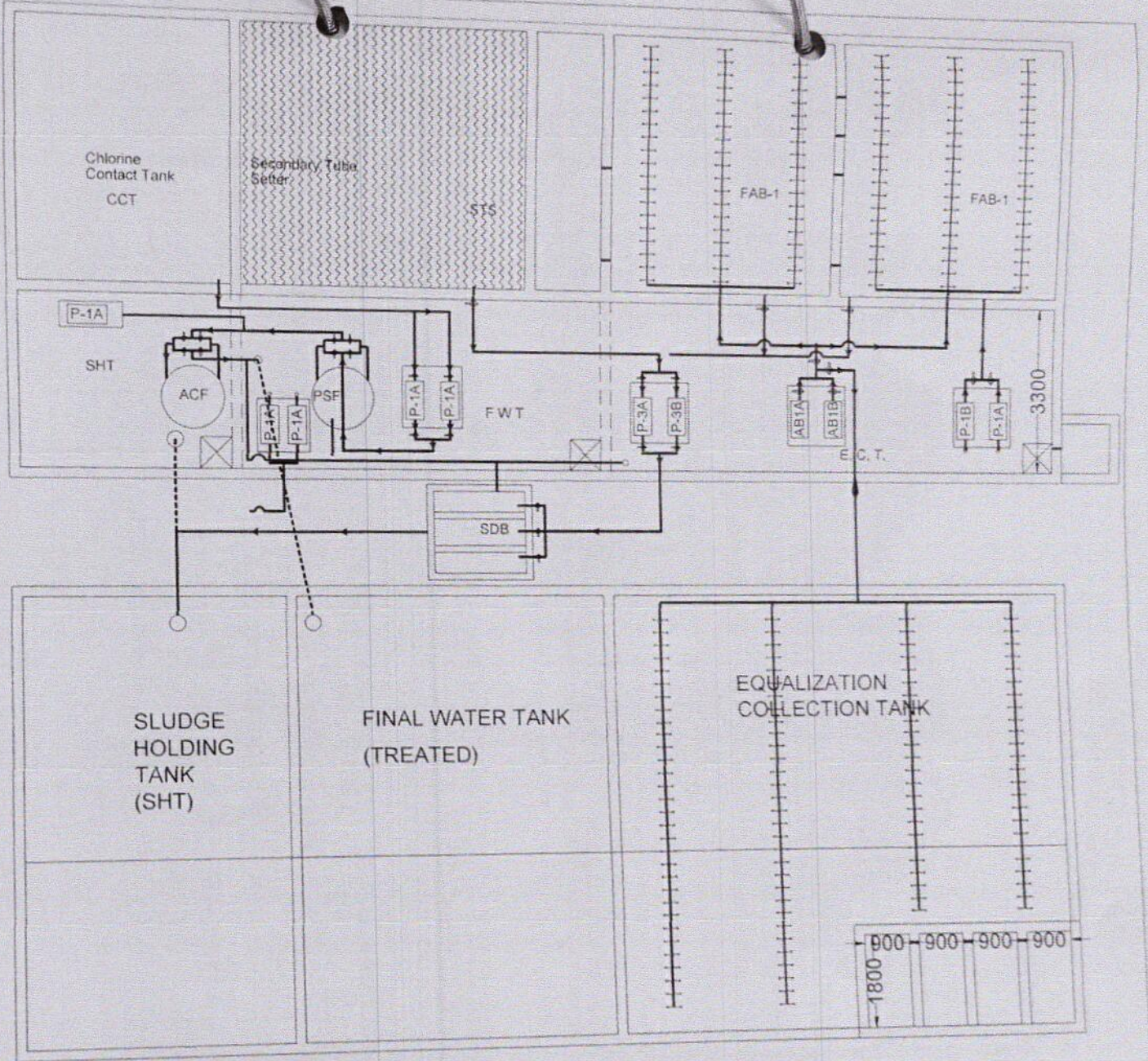
Index Institute of Medical Science,
 Khudail, Indore

[Handwritten Signature]
 Registrar
 Malwanchal University
 INDORE (M.P.)



STP - 500 KLD and ETP-100 KLD

Index Institute of Medical Science,
Khudail, Indore



MACHINE LAYOUT PLAN GROUND LVL
(PROCESS FLOW CHART)

STP - 500 KLD

Index Institute of Medical Science,
Khudail, Indore

[Handwritten Signature]
Registrar
Malwanchal University
INDORE (M.P.)